



## Project Idea Note



### "ESTABLISHMENT OF PILOT LEGAL LOGGING SITES TO COMBAT ILLEGAL LOGGING IN MADAGASCAR".

**Duration of the project:** 2 years

**Estimated cost of the project:** USD 301,520

**Lessor:** to be searched

**Project objective:** To develop a traceability system for wood forest products adapted to the context of Madagascar.

# **I. PROJECT BACKGROUND**

## **1.1 Analysis of the situation**

As one of the tropical countries that have ratified CITES, several points have been recommended to Madagascar through the Action Plan, including the ratification of the International Tropical Timber Agreement of 2006. This was done in October 2016, which made Madagascar the 72nd member of the International Tropical Timber Organization (ITTO) as a producer country. Being a member of this organization has multiple advantages, among which is the opening of markets in ITTO consumer countries for wood products originating from Madagascar. However, it also implies certain conditions, such as the existence of standards for exported products that are set by the producing country but do not diverge from and tend towards ITTO standards. Traceability of wood products from harvesting to marketing is one of these required standards. This is in order to ensure the legality of products placed on the market, to combat illegal logging, and thus to contribute to the sustainable and perennial management of forest resources while taking into account the socio-economic development of the local population.

## **1.2 Description of the problem**

The traceability system is stipulated in the texts and is already practiced by the Forest Administration through the JARIALA project, but is no longer operational. Several experiments have already been carried out in Madagascar to establish the traceability of forest products, mainly wood, but the effectiveness of these experiments has been limited to the local level. This deficiency, which favours illegal exploitation, is moreover one of the causes for which the surface area of the Malagasy forest cover continues to shrink, flooding local and even international markets with illegal products, because their origin is not known and their mode of exploitation up to marketing is not certified to have followed the standards in force.

## **1.3 Relevance of the project idea**

The aim of the project is to ensure that all wood products from Malagasy forests can be identified and traced from their source, with the aim of optimizing the value of Madagascar's forest resources, but above all to encourage consumers to buy only legal products, as illegal products will be seized by the Administration because they cause both loss of earnings and the rapid destruction of the forest heritage. To this end, the following specific objectives are identified:

SO 1: Establish and operationalize a national wood traceability system that can be adapted to local contexts.

SO 2: Trace the origin of all legal timber products from Madagascar encountered on the local and international market Target regions

The project will be implemented in Koloala sites and/or exploitation sites located in the following 9 regions: Analamanga, Boeny/Betsiboka, Vakinankaratra, Amoron'i Mania, Atsimo Andrefana, DIANA, SAVA, Sofia, Melaky.

Moreover, in view of the importance of the project, a request for financing through a Public Investment Project (PIP) was also triggered for its implementation in 6 other Regions Alaotra Mangoro, Analanjirifo, Atsinanana, Bongolava, Haute Matsiatra, Menabe.

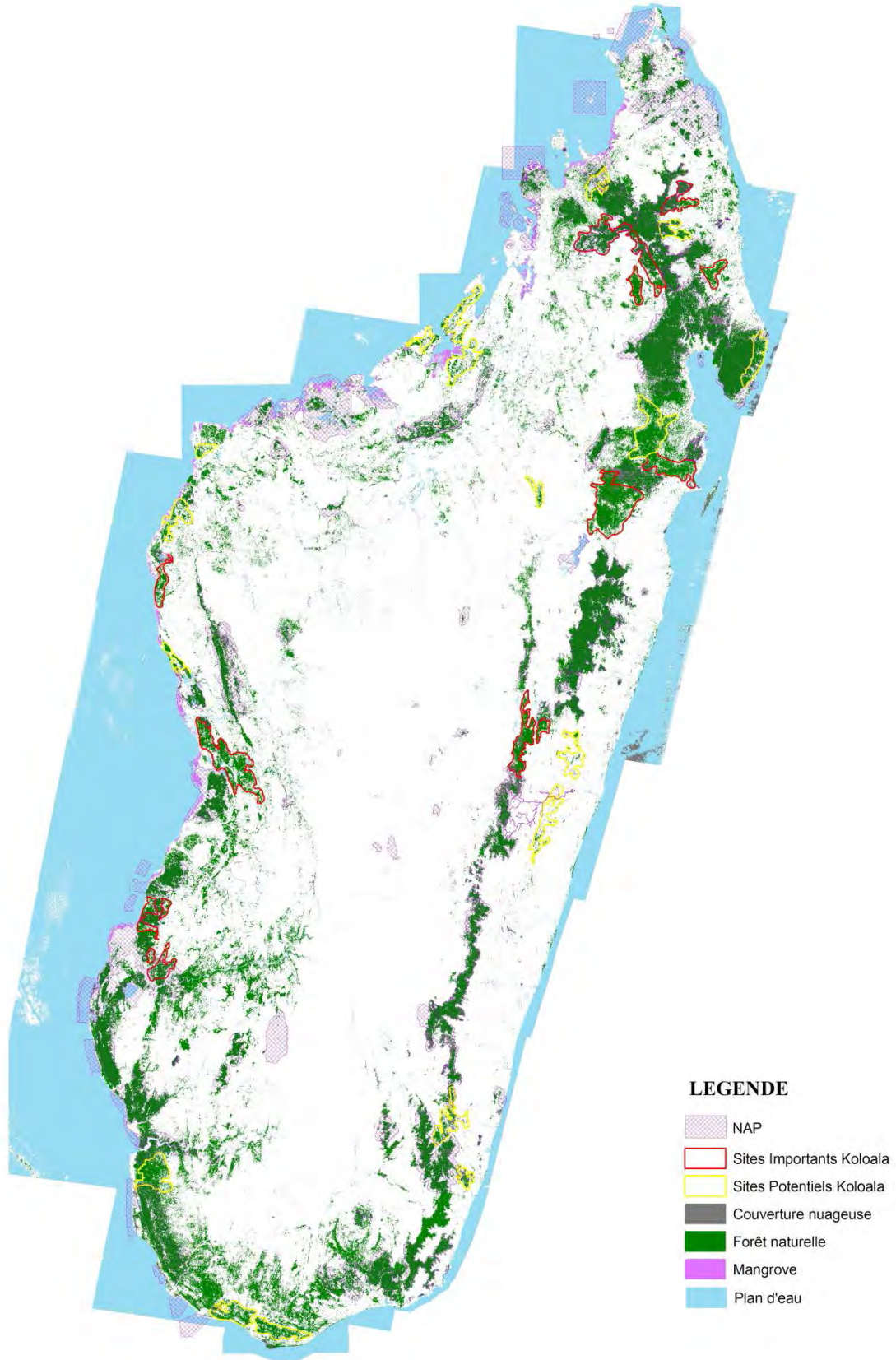


Figure 1: Map of Koloala Sites

## **II. TECHNICAL APPROACH**

### **2.1. Speakers**

- MEDD through the Service in charge of the traceability of forest products, currently including the Service de la Recherche, Valorisation et Exploitation (SRVERF), the Direction Générale de l'Environnement et des Forêts (DGEF), which will coordinate the project, and the Regional Directorates for the Environment and Sustainable Development (MEDD).
- Technical Assistance (TA) which will be composed of national consultant(s)
- Actors working in the exploitation sites (Koloala and New Category V and VI Protected Areas) ;
- Local Communities
- GNEFM: Groupement National des Exploitants Forestiers de Madagascar and other forest operators
- GPEB: Professional Group of Wood Exporters
- Stakeholders and other sectors

### **2.2. Project intervention logic**

- Design of the project document at central level: MEDD/DGEF/DGRNE/SRVERF
- Feasibility study
- Elaboration of the ToR for the recruitment of Technical Assistants (Expert Consultant in wood traceability, Forestry Consultant, Legal Consultant)
- Recruitment of Technical Assistants
- Design of the manual of administrative and financial procedures
- Training of actors and all stakeholders
- Project implementation and monitoring.

*Table 1: Project Logical Framework*

<b>Objectives of the project</b>	<b>Project Results</b>	<b>Project Activities</b>
<p><b>OS1:</b> Set up and operationalize a national wood traceability system adapted to local contexts.</p>	<p><b>R1.1:</b> a traceability system is established at national level  <b>R1.2:</b> the national traceability system is functional  <b>R1.3:</b> the traceability system is adaptable at regional level</p>	<ul style="list-style-type: none"> <li>- Valuing previous experiences with traceability systems in order to establish a starting point for them</li> <li>- To exchange experiences on traceability of wood products with SADC member countries</li> <li>- Finalize the traceability system proposal</li> <li>- Validate and adopt the traceability system</li> <li>- Elaborate a text on wood traceability</li> <li>- Elaborate a text on standards for the categorisation of wood products</li> <li>- Transcribe the traceability system into a manual</li> <li>- Strengthen the capacity of forestry agents at the regional level to monitor timber flow (SRF, SRCEF, CEF)</li> <li>- Provide the Regional Directorates in charge of forests with the equipment necessary for the implementation of the system.</li> </ul>
<p><b>OS2:</b> Trace the origin of all legal wood products from Madagascar found on the local and</p>	<p><b>R2.1:</b> All wood products of legal origin are differentiated from those of illegal origin.  <b>R2.2:</b> All stakeholders are involved, aware, trained  <b>A2.3:</b> Monitoring of forestry</p>	<ul style="list-style-type: none"> <li>- Apply the system at the level of the identified pilot sites</li> <li>- Identify and list the different operators involved</li> <li>- Set up a database management software at regional and central level covering the operation process</li> <li>- Train users of the system at central and regional level</li> <li>- Monitor the implementation of the traceability system developed</li> </ul>

<b>Objectives of the project</b>	<b>Project Results</b>	<b>Project Activities</b>
international market.	operations is punctual.	<ul style="list-style-type: none"><li>- Develop an SIEC (Awareness, Information, Education and Communication) strategy for all stakeholders in the traceability system.</li><li>- Popularize the system</li></ul>



### III. PREVISIONAL BUDGET (to be inserted in the final version)

#### 3.1. Budget by heading

*Table 2: Budget by heading*

N°	Budget line	Unit	Number	Unit cost (USD)	Budget Total (USD)
<b>1</b>	<b>Human Resources</b>				
<b>1.1</b>	<b>Permanent staff</b>				
	Project Coordinator	Male month	24	400	9 600
	Deputy Project Coordinator	Male month	24	300	7 200
	Head of administration and finance	Male month	24	200	4 800
<b>1.2</b>	<b>Temporary staff</b>				
	Consultant Expert wood traceability	Day Man	65	200	13 000
	Forestry Consultant	Day Man	70	200	14 000
	Legal Consultant	Day Man	40	200	8 000
	Consultant Strategy Designer	Day Man	20	200	4 000
	Consultant Translator French/Malagasy	Day Man	20	100	2 000
	Consultant Moderator	Day Man	6	100	600
	DSA international mission Missionaries Formation-Monitoring (4 persons x 10 days) (accommodation + food)	Day Man	40	200	8 000
	DSA national Missionaries Formation-Monitoring (5 persons x 07 days x 9 regions x 3 missions) (accommodation + food)	Day Man	945	60	56 700
	Perdiem Workshop assistants (4 technicians x 02 days)	Day Man	8	25	200
	Per diem and accommodation Representative DREDD Boeny/Betsiboka (validation+vulgarisation)	Overnight stay	8	60	480
	Per diem and accommodation Representative Driver DREDD Boeny/Betsiboka	Overnight stay	8	60	480
	Per diem and accommodation Representative DREDD Vakinankaratra (validation+vulgarisation)	Overnight stay	4	60	240
	Per diem and lodging Representative Driver DREDD Vakinankaratra	Overnight stay	4	60	240
	Per diem and hosting Representative DREDD Amoron'i Mania (validation+vulgarisation)	Overnight stay	4	60	240
	Per diem and accommodation DREDD Driver Representative Amoron'i Mania	Overnight stay	4	60	240
	Per diem and accommodation Representative DREDD Atsimo Andrefana (validation+vulgarisation)	Overnight stay	8	60	480
	Per diem and accommodation Representative Driver DREDD Atsimo Andrefana	Overnight stay	8	60	480
	Per diem and accommodation Representative DREDD DIANA (validation+vulgarisation)	Overnight stay	6	60	360
	Per diem and accommodation DREDD SAVA representative (validation+vulgarisation)	Overnight stay	6	60	360



	Per diem and accommodation DREDD Sofia representative (validation+vulgarisation)	Overnight stay	8	60	480
	Per diem and accommodation DREDD Driver Representative Sofia	Overnight stay	8	60	480
	Per diem and accommodation Representative DREDD Melaky (validation+vulgarisation)	Overnight stay	8	60	480
	Per diem SRF Representative (1 person x 5 days x 8 regions x 2 missions)	Day Man	80	25	2 000
	Per diem SRCEF Representative (1 person x 5 days x 8 regions x 2 missions)	Day Man	80	25	2 000
	Per diem CEF Representatives (2 person x 5 days x 9 regions x 2 missions)	Day Man	180	25	4 500
	ISD Agents - Software Implementation-Software Training (2 people x 7 days x 9 regions + central)	Day Man	140	60	8 400
	<b>Sub-Total 1</b>				<b>150 040</b>
<b>2</b>	<b>Staff travel</b>				
<b>2.1</b>	<b>Transport</b>				
<b>2.1.1</b>	<b>4x4 rental</b>				
	2 Missions in the 9 regions (5 project team personnel + 2 DSI agents x 2 cars x 7 days x 9 regions)	Per day	252	90	22 680
	Monitoring mission (5 persons x 1 car x 7 days x 9 regions)	Per day	63	90	5 670
<b>2.1.2</b>	<b>Fuel 4x4</b>				
	Fuel A/R 9 regions 2 cars and 3 missions (for Analamanga at Cantonment level)	litre	10 980	1	10 980
	Fuel monitoring mission 1 Car (for Analamanga at Cantonment level)	litre	1 830	1	1 830
	Travel expenses Representative DREDD Boeny/Betsiboka (validation+vulgarisation)	litre	400	1	400
	Travel expenses Representative DREDD Vakinankaratra (validation + extension)	litre	120	1	120
	Travel expenses Representative DREDD Amoron'i Mania (validation+vulgarisation)	litre	150	1	150
	Travel expenses Representative DREDD Atsimo Andrefana (validation+vulgarisation)	litre	600	1	600
	Travel expenses Representative DREDD DIANA (PLANE - validation + extension) + travel in town	RETURN JOURNEY	2	515	1 030
	Travel expenses DREDD SAVA representative (Plane - validation + extension) + travel in town	RETURN JOURNEY	2	515	1 030
	Travel expenses Representative DREDD Sofia (validation+vulgarisation)	litre	440	1	440
	Travel expenses bush taxis/Representative DREDD Melaky (validation+extension+Tanà city)	RETURN JOURNEY	2	150	300
	Operation per day during the 3 missions (10l*15 days per region, 9 regions) (for Analamanga at Cantonment level)	litre	1 350	1	1 350
<b>2.1.3</b>	<b>International Travel</b>				
	Travel expenses (for DRC) return airfare	RETURN	4	1750	7 000

		JOURNEY			
	Travel expenses (to South Africa) airfare round trip	RETURN JOURNEY	4	750	3 000
	On-site travel expenses (DRC) 4 days 4 persons	Per day	16	100	1 600
	Travel expenses on site (South Africa) (4 days 4 persons)	Per day	16	100	1 600
	Travel Insurance (DRC) (6 days) 4 persons	Per day	16	200	3 200
	Assurance voyage (South Africa) 4 days 4 persons	Per day	16	200	3 200
	<b>Sub-Total 2</b>				<b>66 180</b>
<b>3</b>	<b>Equipment</b>				
<b>3.1</b>	<b>Computer equipment</b>				
	Laptop Computers	Per unit	2	1000	2 000
	Complete desktop computers (monitor+central unit+inverter+keyboard+mouse / 9 regions + central)	Per unit	11	1000	11 000
	Video projector + projection screen	Per unit	1	1000	1 000
	Laser printers	Per unit	1	1000	1 000
	Professional cameras	Per unit	2	1000	2 000
<b>3.2</b>	<b>Training equipment</b>				
	Notepads (90 people)	Per unit	90	1	90
	Pens (90 people)	Per unit	90	1	90
	USB keys (90 people)	Per unit	90	15	1 350
<b>3.3</b>	<b>Equipment wood traceability system</b>				
	Forest hammers (5 hammers / Region, 9 regions)	Per unit	45	60	2 700
	Other equipment (ink, ... for 9 regions)	Per unit	9	100	900
	Administrative acts (multiplication for 9 regions)	Per unit	9	100	900
	<b>Sub-Total 3</b>				<b>23 030</b>
<b>4</b>	<b>Operation</b>				
<b>4.1</b>	<i>Consumables - Office equipment</i>	<i>Per month</i>			
	Paper for 2 years of operation (5 reams per month)	Per month	120	6	720
	Printer inks (4 inks per month)	Per month	96	30	2 880
	Fixed price telephone communication	<i>Per month</i>	24	100	2 400
	Internet connection subscription	<i>Per month</i>	24	100	2 400
	Bank charges	<i>Per month</i>	24	5	120
	Other office supplies (pens, notepads, whiteboard,...) flat rate per year	<i>Per month</i>	24	100	2 400

<b>4.2</b>	Travel				
	Fuel for the various trips related to the project	<i>Per month</i>	24	200	4 800
	<b>Sub-Total 4</b>				<b>15 720</b>
<b>5</b>	<b>Activities</b>				
<b>5.1</b>	<b>Validation and adoption of traceability system</b>				
	Room rental and sound system (1 room, 1 day)	Per room	1	200	200
	Catering Workshop for 30 people (lunch)	Per pers.	30	20	600
	Coffee break for 30 people	Per pers.	30	10	300
	Mineral water (during workshop, meals)	Per pers.	30	5	150
	Closing cocktail + drinks 30 people	Per pers.	30	20	600
<b>5.2</b>	<b>Popularization of the system</b>				
	Room rental and sound system (1 room, 1 day)	Per room	1	200	200
	Catering Workshop for 90 people (lunch)	Per pers.	60	20	1 200
	Coffee break for 90 people	Per pers.	60	10	600
	Mineral water (during workshop, meals)	Per pers.	60	5	300
	Closing cocktail + drinks 90 people	Per pers.	60	20	1 200
	<b>Sub-Total 5</b>				<b>5 350</b>
<b>6</b>	<b>Communication and visibility</b>				
	<i>Editorial materials (brochures, manuals, etc.)</i>				
	Manual multiplication fee	Per copy	1 000	40	40 000
	<i>Communication supports</i>				
	Validation and Extension Workshop banners	Per unit	6	200	1 200
	<b>Sub-Total 6</b>				<b>41 200</b>
	<b>TOTAL</b>				<b>301 520</b>

3.2. Budget by activity

*Table 3: Budget by Activity*

Specific Objectives	Designation	PU (USD)	Quantity	Amount (USD)
OS1: Set up and operationalize a national wood traceability system adapted to local contexts.	<b>Activity 1-1: Valorize previous experiences with available traceability systems</b>			
	Consultant's fee Wood traceability expert	200	10	2000
	Forestry Consultant Fee	200	10	2000
	<b>SUB-TOTAL (A1)</b>			<b>4000</b>
	<b>Activity 1-2: Exchange experiences on wood product traceability with SADC member countries</b>			
	Consultant's fee Wood traceability expert	200	10	2000
	Forestry Consultant Fee	200	10	2000
	DSA for missionaries: accommodation + food (2 project representatives and 2 consultants) ( 10 days)	200	40	8000
	Travel expenses (for DRC) return airfare	1750	4	7000
	On-site travel expenses (DRC) 4 days 4 persons	100	16	1600
	Travel Insurance (DRC) (6 days) 4 persons	200	16	3200
	Travel expenses (to South Africa) airfare round trip	750	4	3000
	Travel expenses on site (South Africa) (4 days 4 persons)	100	16	1600
	Assurance voyage (South Africa) 4 days 4 persons	200	16	3200
	<b>SUB-TOTAL (A2)</b>			<b>31600</b>
	<b>Activity 1-3: - Finalize the traceability system proposal</b>			
	Consultant's fee Wood traceability expert	200	2	400
	Forestry Consultant Fee	200	1	200
	<b>SUB-TOTAL (A3)</b>			<b>600</b>
	<b>Activity 1-4: Validate and Adopt the Traceability System</b>			
	Preparation of the Workshop 2 working days consultant Wood traceability expert	200	1	200
	Preparation of the Workshop 2 working days consultant Forester	200	1	200
	Preparation of the Consultant Moderator Workshop (2 working days)	100	2	200
Fuel for DREDD Boeny/Betsiboka (administrative car)	1	200	200	
Per diem and accommodation DREDD Boeny/Betsiboka (4 nights)	60	4	240	
Per diem and accommodation Driver DREDD Boeny/Betsiboka	60	4	240	

Fuel displacement DREDD vakinankaratra (administrative car)	1	60	60
Per diem and accommodation DREDD vakinankaratra (2 nights)	60	2	120
Per diem and accommodation Driver DREDD vakinankaratra	60	2	120
Fuel displacement DREDD amoron'i mania (administrative car)	1	75	75
Per diem and accommodation DREDD amoron'i mania (2 nights)	60	2	120
Per diem and accommodation Driver DREDD amoron'i mania	60	2	120
Fuel displacement DREDD atsimo andrefana (administrative car)	1	300	300
Per diem and accommodation DREDD atsimo andrefana (4 nights)	60	4	240
Per diem and accommodation Driver DREDD atsimo andrefana	60	4	240
Travel expenses DREDD DIANA (airplane + city trip)	515	1	515
Per diem and accommodation DREDD DIANA (3 nights)	60	3	180
DREDD SAVA travel expenses (airplane + city trip)	515	1	515
Per diem and DREDD SAVA accommodation (3 nights)	60	3	180
Travel expenses DREDD Sofia (administrative car)	1	220	220
Per diem and accommodation DREDD Sofia (4 nights)	60	4	240
Per diem and accommodation Driver DREDD Sofia	60	4	240
Per diem and accommodation DREDD Melaky	60	4	240
Travel expenses DREDD Melaky (taxi-brousse) + city travel expenses	150	1	150
Catering Workshop (lunch)	20	30	600
Coffee break 30 people 1 day	10	30	300
Mineral water during the workshop and lunch	5	30	150
Rental room and sound system (1 day)	200	1	200
Consultant's fee Wood traceability expert	200	1	200
Consultant's fee Forestry	200	1	200
Fee for moderating intervention 1 day	100	1	100
Allowance 4 assistants 1j	25	4	100
Closing cocktail + drinks 30 pers	20	30	600
15-inch laptops	1 000	2	2 000

video projector + projection screen	1 000	1	1 000
Printer for printing	1 000	1	1 000
Cameras	1 000	2	2 000
Notepads	1	30	30
Pens	1	30	30
USB key	15	30	450
Banners	200	3	600
Consultant's fee Wood traceability expert writing workshop report	200	1	200
Consultant Fee Forester writing workshop report	200	1	200
<b>SUB-TOTAL (A4)</b>			<b>15 115</b>
<b>Activity 1-5: Develop a text on wood traceability</b>			
Consultant's Fee Lawyer	200	9	1 800
Forestry Consultant Fee	200	5	1 000
Consultant's fee Wood traceability expert	200	5	1 000
<b>SUB-TOTAL (A5)</b>			<b>3 800</b>
<b>Activity 1-6: Develop a text on wood product categorization standards</b>			
Consultant's Fee Lawyer	200	10	2 000
Forestry Consultant Fee	200	10	2 000
<b>SUB-TOTAL (A6)</b>			<b>4 000</b>
<b>Activity 1-7: Transcribe your traceability system into a manual</b>			
Consultant's fee Wood traceability expert	200	10	2 000
Forestry Consultant Fee	200	10	2 000
Consultant fee French/Malagasy translator	100	20	2 000
Manual multiplication fee	40	1 000	40 000
<b>SUB-TOTAL (A7)</b>			<b>46 000</b>
<b>Activity 1-8: Strengthen the capacity of forestry agents at regional level (SRF, SRCEF, CEF) to monitor timber flows</b>			
DSA of missionaries lodging and food (3 Formators/2 Assistants/9 regions/7 days)	60	315	18 900
Consultant fees Wood traceability expert (as trainer)	200	7	1 400
Forestry consultant fee (as trainer)	200	7	1 400
Fees for legal consultants (as trainer)	200	7	1 400
4x4 rental (2 cars/9 regions/7 days)	90	126	11 340
AR fuel 9 regions (588l+900l+730l+500l+830l+1434l+1176l+1400l+754l)	1		5 490

			5 490		
	Operation during missions (10l*5 days per region, 9 regions)	1	450	450	
	SRF Representative Allowance (1 person x 5 days x 8 regions)	25	40	1 000	
	SRCEF Representative Allowance (1 person x 5 days x 8 regions)	25	40	1 000	
	Allowance CEF Representatives (2 person x 5 days x 9 regions)	25	90	2 250	
	<b>SUB-TOTAL (A8)</b>			<b>44 630</b>	
	<b>Activity 1-9: Provide the regional directorates in charge of forests with the equipment necessary for the implementation of the system.</b>				
	Complete desktop computers (monitor+central unit+inverter+keyboard+mouse / 9 regions)	1 000	9	9 000	
	Forest hammers (5 hammers / Region, 9 regions)	60	45	2 700	
	Duplication Administrative acts (LP, AT, PV)	100	9	900	
	Other equipment (ink, ...)	100	9	900	
	<b>SUB-TOTAL (A9)</b>			<b>13 500</b>	
	<b>SUB-TOTAL (A)</b>			<b>163 245</b>	
<b>OS2: Trace the origin of all legal wood products from Madagascar found on the local and international market.</b>	<b>Activity 2-1: Applying the system at the identified pilot sites</b>				
	<b>Activity 2-2: Identify and list the different operators involved</b>				
		DSA of missionaries lodging and food (3 Formators/2 Assistants/9 regions/7 days)	60	315	18 900
		Consultant fees Wood traceability expert (as trainer)	200	7	1 400
		Forestry consultant fee (as trainer)	200	7	1 400
		Fees for legal consultants (as trainer)	200	7	1 400
		4x4 rental (2 cars/9 regions/7 days)	90	126	11 340
		AR fuel 9 regions (588l+900l+730l+500l+830l+1434l+1176l+1400l+754l)	1	5 490	5 490
		Operation during missions (10l*5 days per region, 9 regions)	1	450	450
		SRF Representative Allowance (1 person x 5 days x 8 regions)	25	40	1 000
		SRCEF Representative Allowance (1 person x 5 days x 8 regions)	25	40	1 000
		Allowance CEF Representatives (2 person x 5 days x 9 regions)	25	90	2 250
		<b>SUBTOTAL (B1-B2)</b>			<b>44 630</b>



<b>Activity 2-3: Set up database management software at regional and central level covering the operation process</b>			
<b>Activity 2-4: - Train users of the system at central and regional level</b>			
ISD staff allowance (2 persons/9 regions/7 days)	60	140	8 400
Complete desktop computers (monitor+central unit+inverter+keyboard+mouse at central level)	1 000	2	2 000
<b>SUB-TOTAL (B3)</b>			<b>10 400</b>
<b>Activity 2-5: - Monitor the implementation of the developed traceability system</b>			
DSA of missionaries lodging and food (3 Formators/2 Assistants/9 regions/7 days)	60	315	18 900
Consultant fees Wood traceability expert (as trainer)	200	7	1 400
Forestry consultant fee (as trainer)	200	7	1 400
Fees for legal consultants (as trainer)	200	7	1 400
4x4 rental (1 car/9 regions/7 days)	90	63	5 670
AR fuel 9 regions (588l+900l+730l+500l+830l+1434l+1176l+1400l+754l)	1	1 830	1 830
Operation per day during missions (10l*5 days per region, 9 regions)	1	450	450
<b>SUB-TOTAL (B4)</b>			<b>31 050</b>
<b>Activity 2-6: - Develop an SIEC (Awareness, Information, Education and Communication) strategy for all stakeholders of the traceability system</b>			
Fees Consultant Strategy Designer	200	16	3 200
<b>SUB-TOTAL (B5)</b>			<b>3 200</b>
<b>Activity 2-7: - Popularizing the system</b>			
Preparation 2 days consultant workshop Expert traceability wood	200	2	400
Preparation 2 days consultant workshop Strategy designer	200	2	400
Preparation of the Consultant Moderator Workshop (2 working days)	100	2	200
Travel expenses DREDD boeny/betsiboka (administrative car)	1	200	200
Per diem and accommodation DREDD boeny/betsiboka (4 nights)	60	4	240
Per diem and accommodation Driver DREDD boeny/betsiboka	60	4	240
Travel expenses DREDD vakinankaratra (administrative car)	1	60	60
Per diem and accommodation DREDD vakinankaratra (2 nights)	60	2	120
Per diem and accommodation Driver DREDD vakinankaratra	60	2	120
Travel expenses DREDD amoron'i mania (administrative car)	1	75	75

Per diem and accommodation DREDD amaron'i mania (2 nights)	60	2	120
Per diem and accommodation Driver DREDD amaron'i mania	60	2	120
Travel expenses DREDD atsimo andrefana (administrative car)	1	300	300
Per diem and accommodation DREDD atsimo andrefana (4 nights)	60	4	240
Per diem and accommodation Driver DREDD atsimo andrefana	60	4	240
Travel expenses DREDD DIANA (airplane + city trip)	515	1	515
Per diem and accommodation DREDD DIANA (3 nights)	60	3	180
DREDD SAVA travel expenses (airplane + city trip)	515	1	515
Per diem and DREDD SAVA accommodation (3 nights)	60	3	180
Travel expenses DREDD Sofia (administrative car)	1	220	220
Per diem and accommodation DREDD Sofia (4 nights)	60	4	240
Per diem and accommodation Driver DREDD Sofia	60	4	240
Travel expenses DREDD Melaky (taxi-brousse) + city travel expenses	150	1	150
Per diem and accommodation DREDD Melaky	60	4	240
Catering Workshop (lunch)	20	60	1 200
Coffee break 60 people 1 day	10	60	600
Mineral water during the workshop and lunch	5	60	300
Rental room and sound system (1 day)	200	1	200
Consultant's fee Wood traceability expert	200	1	200
Consultant fee Strategy designer	200	1	200
Fee for moderating intervention 1 day	100	1	100
Allowance 4 assistants 1j	25	4	100
Closing cocktail + drinks 60 pers	20	60	1 200
Notepads	1	60	60
Pens	1	60	60
Support (USB key)	15	60	900
Banners	200	3	600
Consultant's fee Wood traceability expert writing workshop report	200	1	200
Consultant fee Strategy designer writing workshop report	200	1	200
<b>SUB-TOTAL (B6)</b>			<b>11 675</b>
<b>SUB-TOTAL (B)</b>			<b>100 955</b>
<b>Permanent staff</b>			

Project Coordinator	400	24	9 600
Deputy Project Coordinator	300	24	7 200
Consultant in administration and finance	200	24	4 800
Paper for 2 years of operation (5 reams per month)	6	120	720
Printer inks (4 inks per month)	30	96	2 880
Other office supplies (pens,notepads,whiteboard, etc.)	100	24	2 400
Fixed price telephone communication	100	24	2 400
Internet connection subscription	100	24	2 400
Bank charges	5	24	120
Fuel for the various trips related to the project	200	24	4 800
<b>SUB-TOTAL (C)</b>			<b>37 320</b>
<b>GRAND TOTAL = Sub Total A + Sub Total B + Sub Total C</b>			<b>301 520</b>