

SADC-JICA FORESTRY PROJECT

“Use of the results of FIS and FFM training – Present state and future plan”

COUNTRY: ZIMBABWE

RICHARD MUCHENA & BEKITHEMBA NGWENYA

4th EXPERT WORKING GROUP MEETING

24th FEBRUARY – 27th FEBRUARY 2020

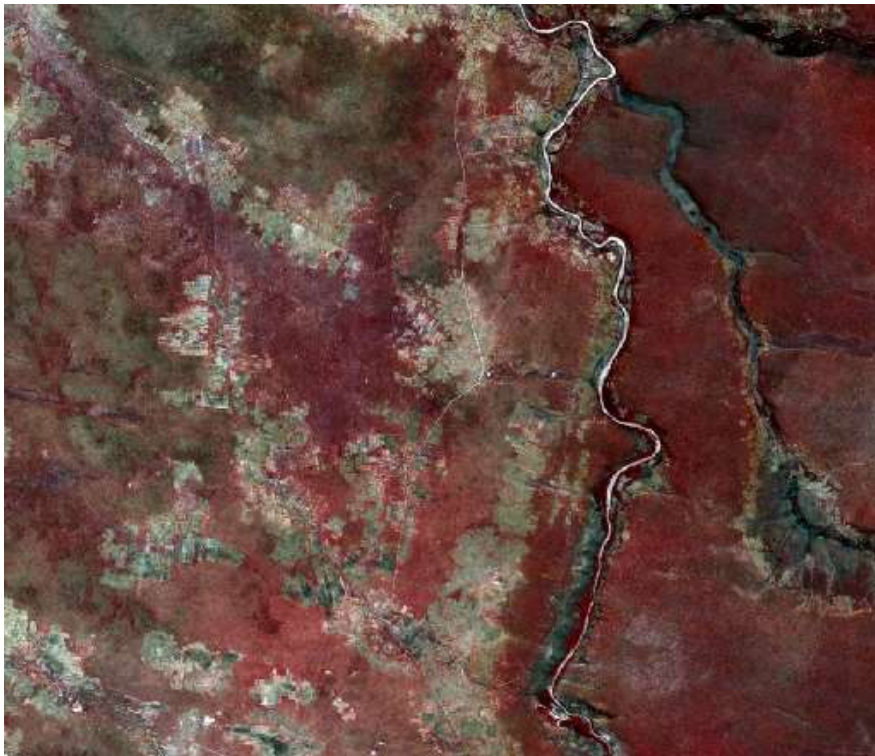
KASANE, BOTSWANA



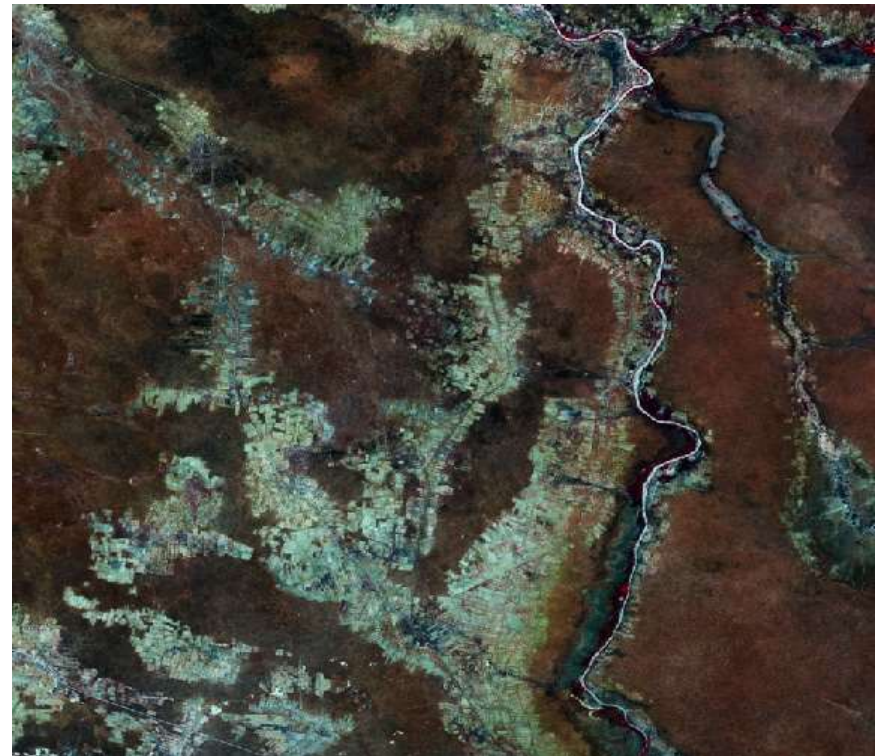
Zimbabwe scenario

FOREST COVER CHANGE

2000

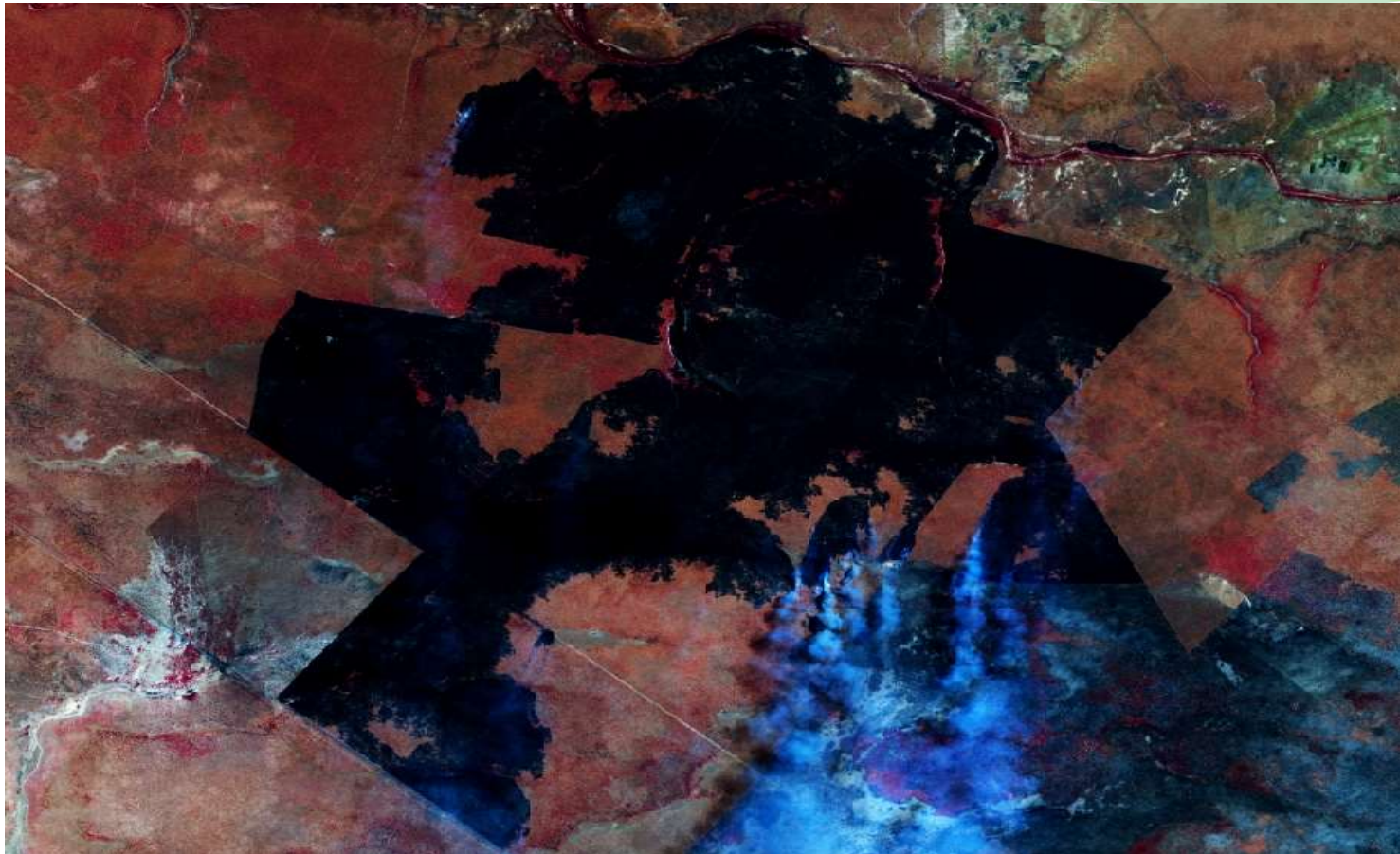


2019



Zimbabwe scenario (Cont'd)

FOREST FIRES



FIS Training results

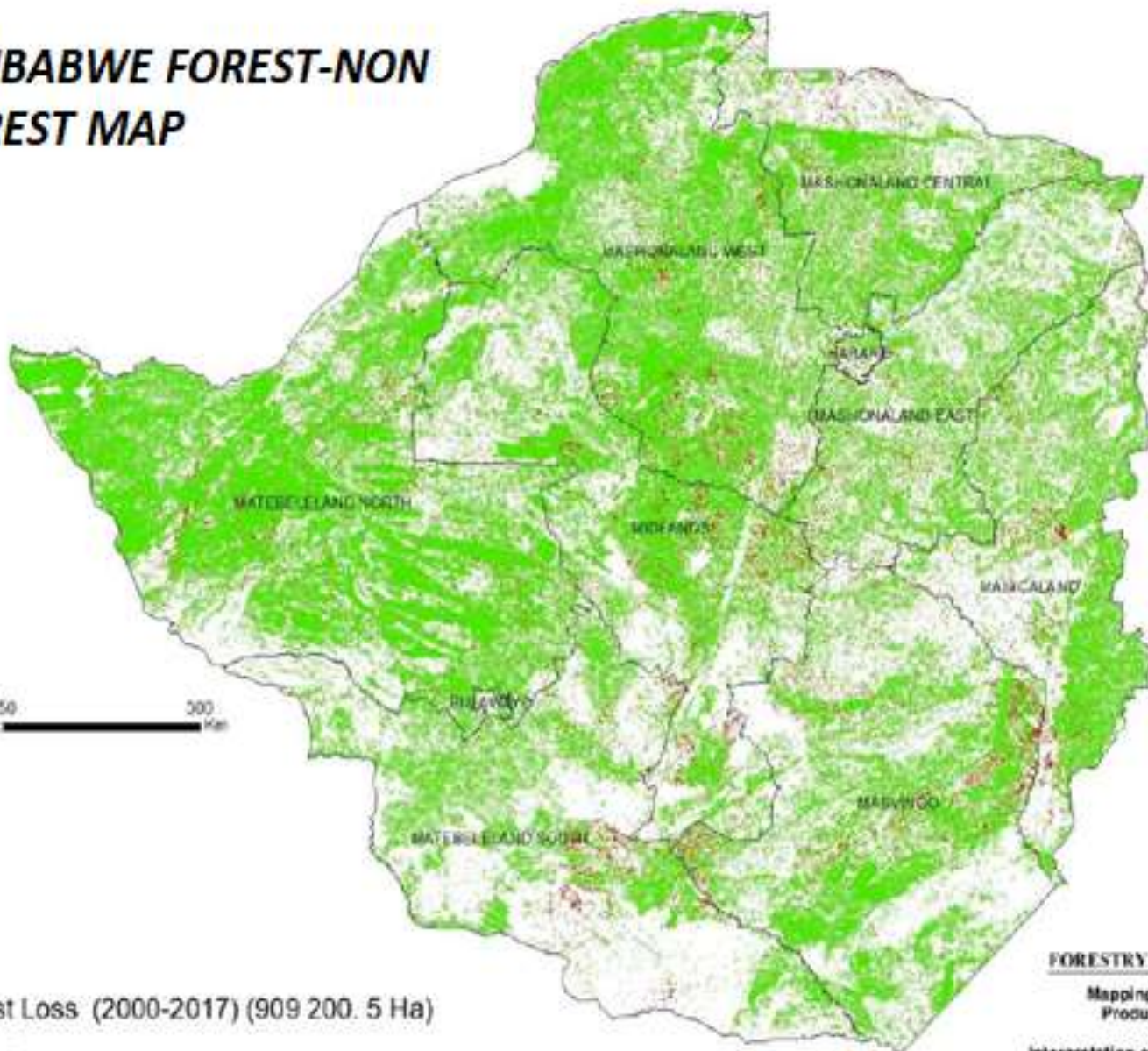
*Improved GIS and remote sensing skills

The screenshot displays the Google Earth Engine web interface. The browser address bar shows the URL: `code.earthengine.google.com/?scriptPath=users%2FRichy_Muchena%2Fdefault%3AZim_2017_Forest_Non_Forest`. The interface includes a search bar, a navigation menu with 'Scripts', 'Docs', and 'Assets', and a toolbar with 'Get Link', 'Save', 'Run', 'Reset', and 'Apps' buttons. The script editor shows the following code:



```
156 //Application of Masks
157
158 var classified_correct = classified.where(water2.eq(1),5);
159 var classified_correct2 = classified_correct.where(cities2.eq(1),2);
160
161 Map.addLayer(classified_correct2, {min:1, max:2, palette :[['11a515', 'ffecd7']]}), 'LC8_Zim_2017_Forest_Non_Fo
162 var odk_13oct17 = ee.FeatureCollection('ft:1VylhtXjagInDZouT5F73e-94uuuqFe0dLXkpk-y');
163 //var odk_13oct17_filtered = odk_13oct17.filterMetadata('CropLand', 'equals',1);
164 Map.addLayer(odk_13oct17, {}, 'odk', true);
165
```

The map view shows a satellite image of Zimbabwe and surrounding regions (Botswana, Mozambique, Namibia, Madagascar). A large area in central Zimbabwe is overlaid with a multi-colored classification map, primarily in shades of green and yellow. The 'Inspector' panel on the right shows a layer named 'Miombo_classification1' with a checkmark and a '4m' scale indicator. The 'Layers' panel on the right shows 'Map' and 'Satellite' options.

ZIMBABWE FOREST-NON FOREST MAP



Legend

-  Forest Loss (2000-2017) (909 200. 5 Ha)
-  Forest


FORESTRY COMMISSION 

Mapping & Inventory Unit
Produced March 2019

Interpretation of Landsat Mosaic Images
Using Google Earth Engine

FIS Training results (cont'd)

* Improved data collection techniques

 **Fill Blank Form**

collect_earth
Version: vinAHJk8rnAy9uJPqEXra9
Added on Wed, Jan 15, 2020 at 15:17

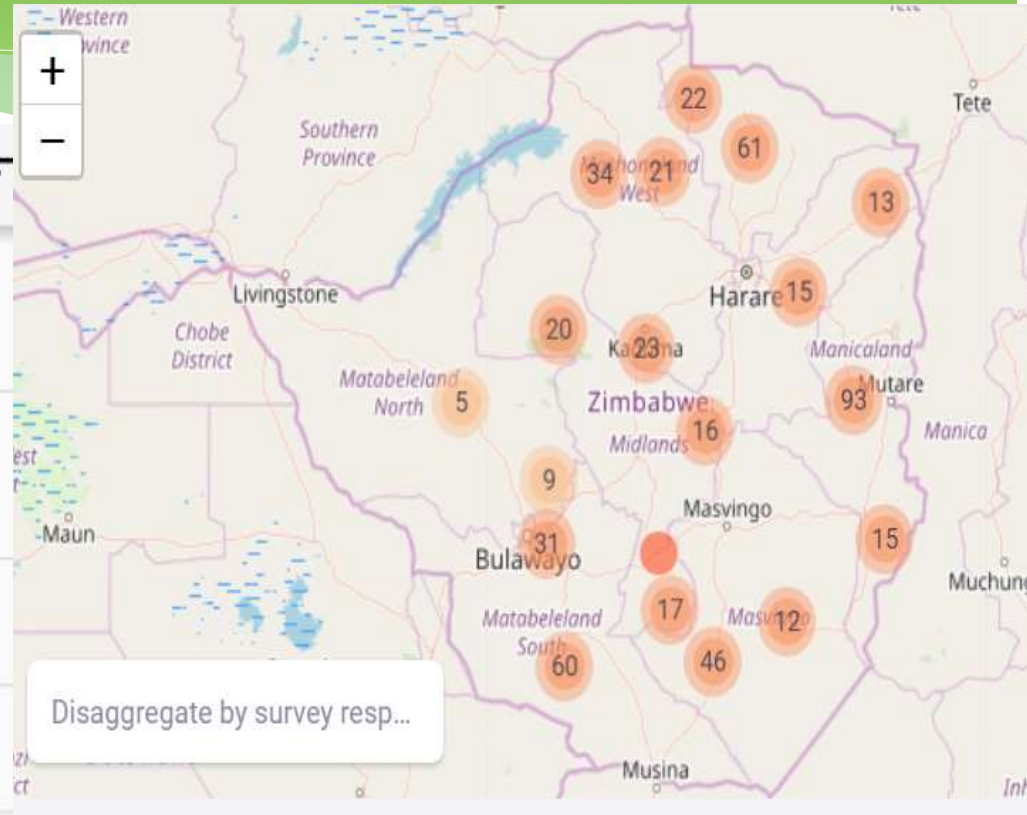
collect_earth
Version: vZjJAE6JUMcPPYAEpHAZvT
Added on Wed, Jan 15, 2020 at 15:17

Forest Plots sheet
Added on Mon, Jul 15, 2019 at 16:52

Form to learn
Added on Tue, Jul 09, 2019 at 14:10

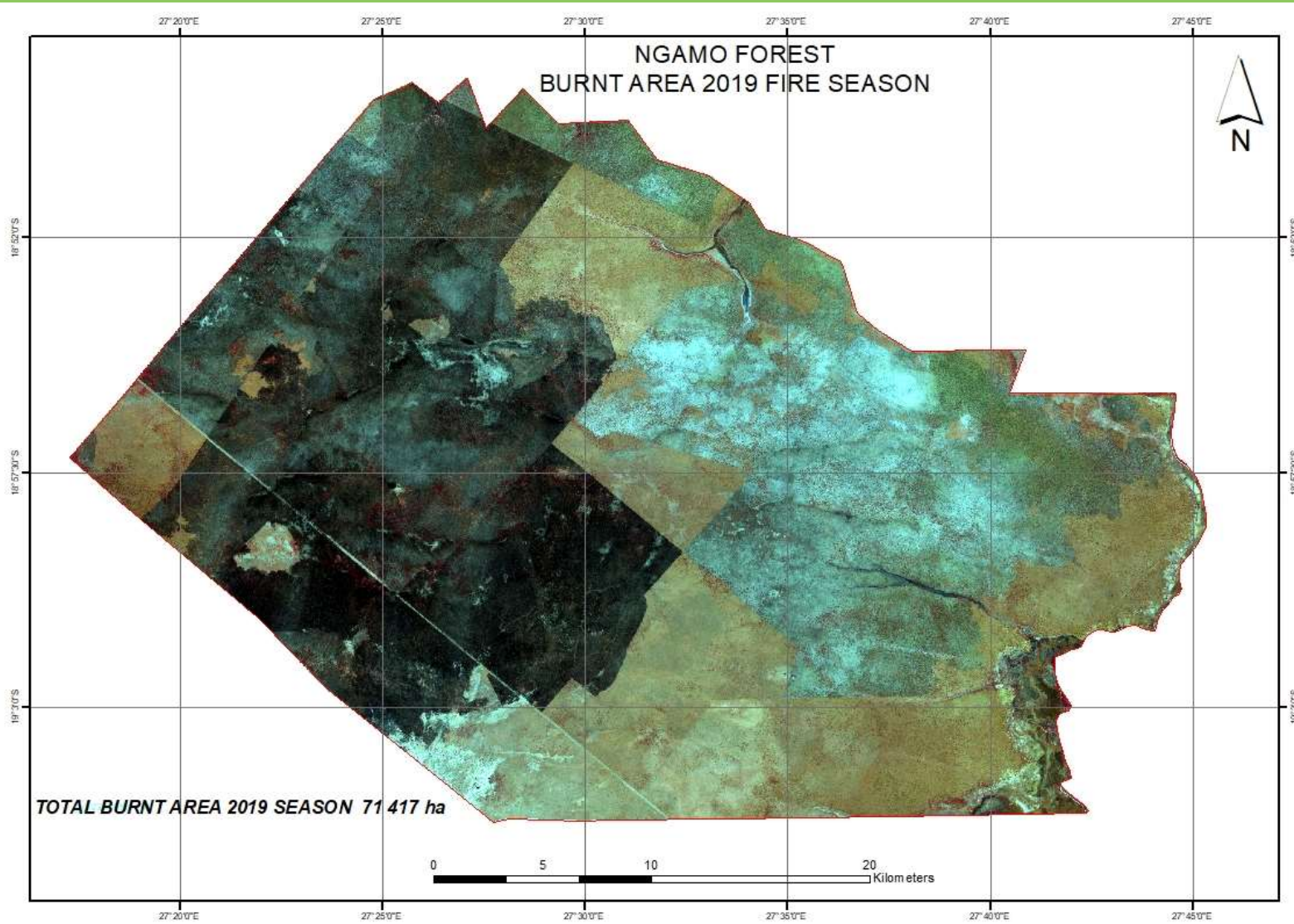
SADC FIS Field Survey
Added on Tue, Jul 09, 2019 at 09:50

Vegetation cover Mapping
Added on Mon, Jul 15, 2019 at 16:52



FIS Training results (cont'd)

- * Adoption of free online data sources



Future plan

- * National geoportal
- * National Forest Inventory
- * National REDD+ Project

Status after FFM training

- * Knowledge gained during FFM training was shared with colleagues and senior management in the department.
- * Hot spot areas for wildland fires were identified during the course of 2019 and community fire awareness meetings conducted in those areas.
- * Over 1000 community members were reached in Matabeleland North province alone
- * Fire pre suppression measures were carried out in gazetted forests which included early block burning to reduce fuel load, opening of fire breaks/lines and burning of fireguards.

Challenges

- * Limited resources
- * Poor community participation in fire related activities
- * Absence of deterrent fines
- * Complexity of environmental related crimes
- * Inadequate training

Future plans

- * Fire management to move away from fire fighting to fire prevention and sustainable practices such as early burning
- * Need for extensive training of communities on fire management and management of ignition sources
- * There is need for support in procuring fire fighting tools and equipment, training of staff, other stakeholders and community members
- * Lobbying of policy makers to adopt the South African model of Fire Protection Associations

THANK YOU!