



**MINISTRY OF FORESTRY, RANGE AND SOIL  
CONSERVATION, LESOTHO**

**THE USE OF RESULTS OF FIS AND FFM TRAINING IN LESOTHO**

**BY:  
Fokothi Lekhooa  
and  
Sethunya Mohlalefi**

# OVERVIEW



- ❑ Introduction
- ❑ Status of FIS and FFM prior the project
- ❑ Results of FIS and FFM training
- ❑ The future plan

# Background information

- ▶ Land -locked country surrounded by South Africa.
- ▶ Has a total land area of 30, 355 km<sup>2</sup>
- ▶ Population of about 2.1 million (Lesotho Census 2016).
- ▶ Altitude ranges between 1380 m-3480m above sea level



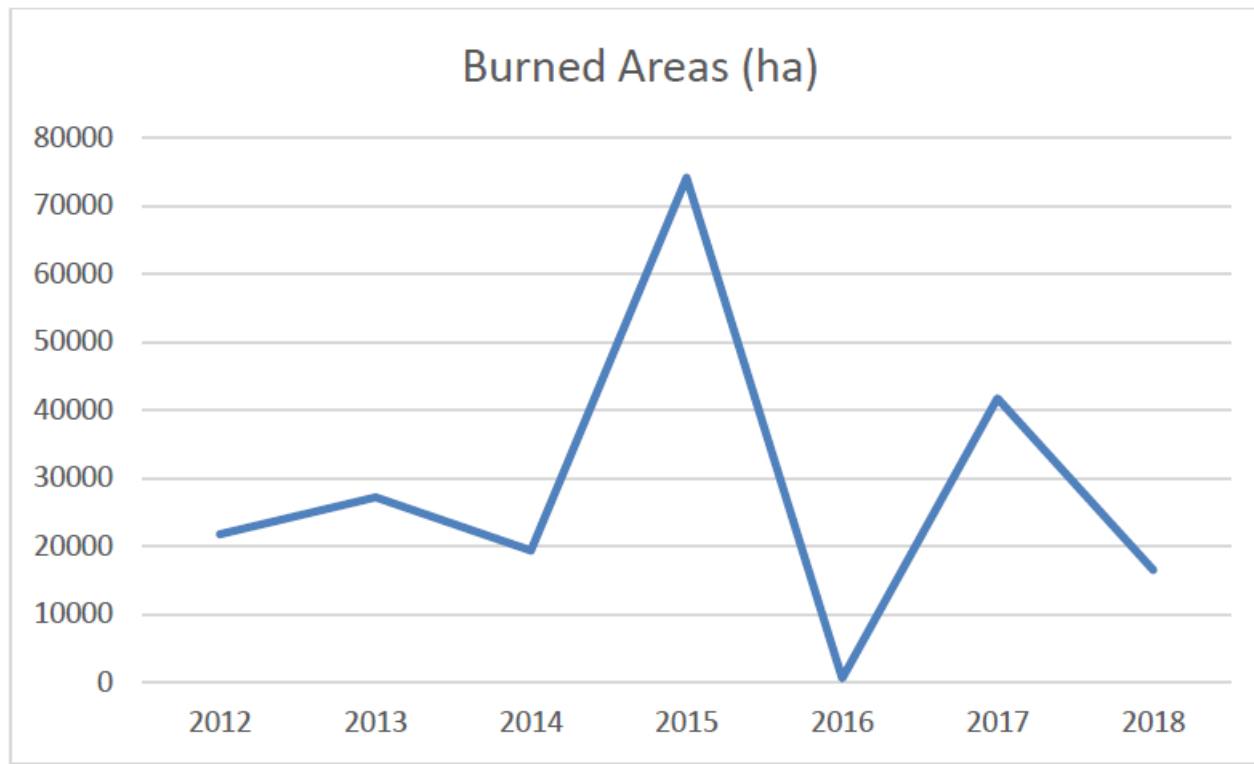
# Summary Land Cover Statistics of Lesotho

| Aggregated LC Classes | Code | Hectarage (ha)   | % of Lesotho |
|-----------------------|------|------------------|--------------|
| Built-up              | AGBU | 126,091          | 4.1          |
| Agricultural land     | AGAG | 578,039          | 18.9         |
| Trees                 | AGTR | 38,404           | 1.3          |
| Shrubland             | AGSH | 584,328          | 19.1         |
| Grassland             | AGGR | 1,516,051        | 49.6         |
| Wetland               | WET  | 32,580           | 1.1          |
| Water Bodies & Rivers | AGWT | 28,241           | 0.9          |
| Barrenland            | AGBR | 151,581          | 5.0          |
| <b>TOTAL</b>          |      | <b>3,055,314</b> | <b>100</b>   |

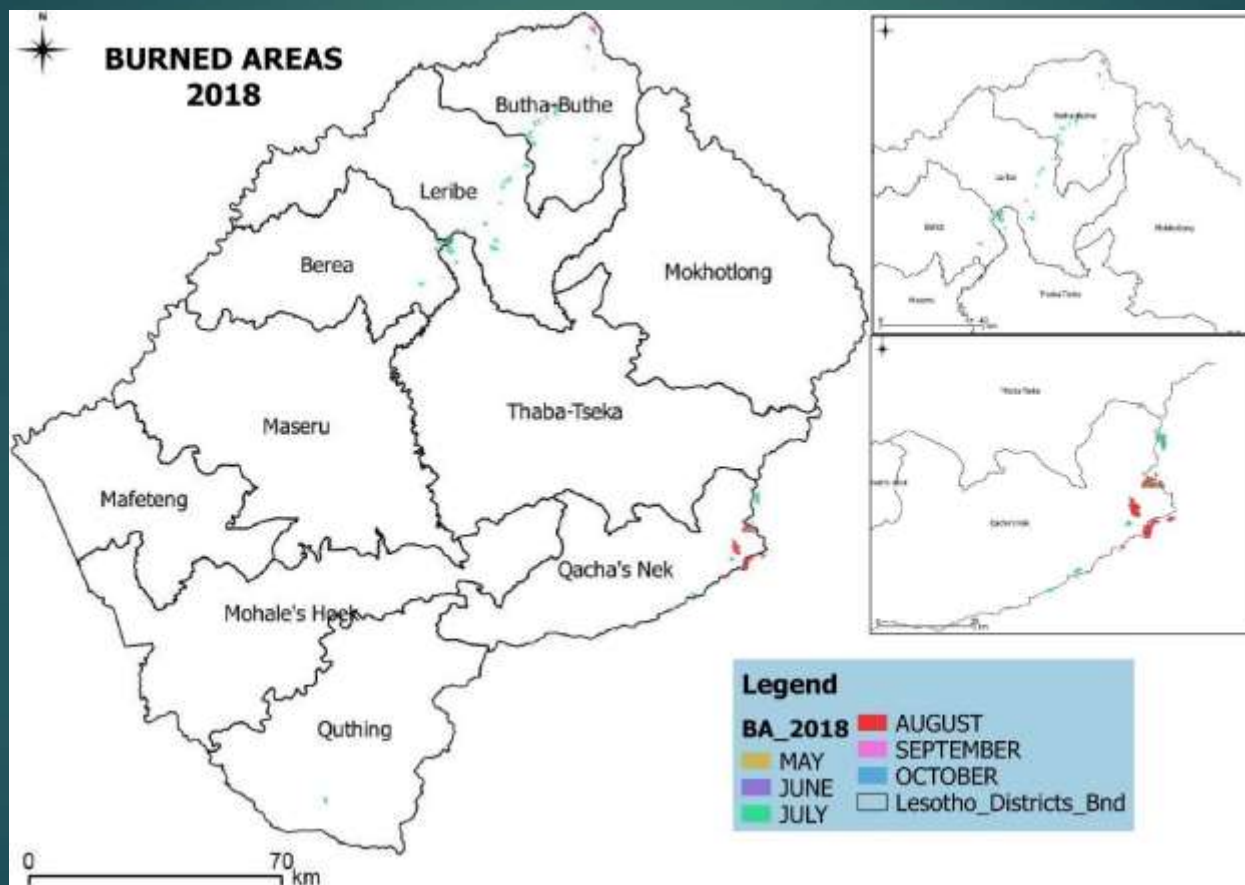
# Status of FIS and FFM prior the project

- ▶ Due to low forest cover (1.3%), the forest fires incidence were very low
- ▶ Fire was still considered as a forest management or silvicultural tool
- ▶ Fires occurred more on rangelands and protected areas such as national parks, catchment areas etc
- ▶ Data kept was mainly on number of trees planted with core objective of addressing fuel wood demand

# Fire trend from 2012 to 2018 annual burned areas in Lesotho



# Burned Areas for 2018, highlighting most affected districts



# Techniques applied to minimise spread of wild fires





# Techniques applied to minimise spread of wild fires cont..

- ▶ Public gatherings countrywide focusing more on high risk areas
- ▶ Radio & TV programs
- ▶ Targeted public meetings & events



# Results of the FIS and FFM training

- ▶ Capacity building on the use of Tablet
  - to demarcate a burned area
  - Discussion of the results
- Training of QGIS has been conducted for Forestry technical staff
- Duplication and distribution of training manuals to the Forestry technical staff
- Establish collaboration between Department of Forestry with other agencies on wildfire management
- Climate change challenges and SADC-JICA project acted as an eye opener for gathering more information on forestry resources
- Lesotho hosted SADC member states training on Forest Fire Management

# Results of the FIS and FFM training cont..

Burnt forest



Demarcation



Discussion



# The future plan for FIS/FFM in Lesotho

- ▶ Conduct national forest inventory
- ▶ Develop localized integrated wildfire training manual
- ▶ Develop forest fire management systems with the aim of detection and suppression in an early stage.
- ▶ Strengthen stakeholder participation to attain sustainable forest management
- ▶ Establish and capacitate firefighting teams within the Ministry (10 districts)
- ▶ Be capacitated with forest change detection analysis and producing forest loss and gain maps



# KEA LEBOHA